

| DATE REVISED | DATE FILMED | DATE REVISED | DATE FILMED | FED. ROAD DIST. NO. | STATE | FED. AID PROJ. NO. | SHEET NO. | TOTAL SHEETS |
|-------------------------|----------------|-----------------|----------------|------------------------|-------|--------------------|--------------|-----------------|
| | | | | 6 | ARK. | | | |
| | | | | JOB NO. | | BR-66-4 | 6 | 33 |
| ① 4607 QUANTITIES 29614 | | | | | | | | |

SCHEDULE OF BRIDGE QUANTITIES

| BRIDGE NO. 4607 | CODE NO. X020 | NAME BIG BELLEVILLE CREEK | TITLE CREEK | LIMIT OF STRUCTURE | ITEM | SP# 802 | SP# 802 | SP# 802 | SP# 802 | 803 | 804 | * 805 | * 805 | 812 | SP# 816 | SP# 816 | SP 820 |
|---------------------------------|------------------|------------------------------|----------------|--------------------------|------|------------------------|--|--|--|--------------------------|----------------------------------|--|--|--------------------------------------|------------------|-------------------|--------------------|
| | | | | | | CLASS S CONCRETE | 25' PRECAST CONCRETE CURB UNITS | 25' PRECAST CONCRETE INTERIOR UNITS | 25' PRECAST CONCRETE PARAPET RAIL UNITS | BOILED LINSEED OIL | REINFORCING STEEL (GR. 60) | STEEL BEARING PILING (HP 10x42) | STEEL BEARING PILING (HP 12x53) | BRIDGE NAME PLATES (TYPE C) | DUMPED RIPRAP | FILTER BLANKET | PILE ENGASEMENT |
| | | | | | | CU. YD. | EACH | EACH | EACH | GALLON | POUND | LIN. FT. | LIN. FT. | EACH | CU. YD. | SQ. YD. | LIN. FT. |
| END BENT NOS. 1 & 4 | | | | | | 15.20 | | | | | 2200 | 200 | | 1 | 179 | 358 | |
| INT. BENT NOS. 2 & 3 | | | | | | 10.80 | | | | | 1640 | | 200 | | | | 80 |
| 3-25'-0" PRECAST CONCRETE SPANS | | | | | | | 6 | 15 | 6 | 5.3 | | | | | | | |
| | | | | | | | | | | | | | | | | | |
| TOTAL FOR JOB NO. BR-66-4 | | | | | | 26.00 | 6 | 15 | 6 | 5.3 | 3840 | 200 | 200 | 1 | 179 | 358 | 80 |

* REFER TO SP 807-5

GARY ASHLEY
DESIGN SECTION SUPERVISOR

SCHEDULE OF
BRIDGE QUANTITIES
BIG BELLVILLE CREEK BR. & APPRS.
SEVIER COUNTY
CO. RD. 304
ARKANSAS STATE HIGHWAY COMMISSION
LITTLE ROCK, ARK.

DRAWN BY: EJR DATE: 1-28-88
CHECKED BY: GVA DATE: 2-2-88 SCALE: NONE
DESIGNED BY: _____ DATE: _____
BRIDGE NO. 4607 DRAWING NO. 29614

V. J. Pinkerton
BRIDGE ENGINEER

| DATE REVISED | DATE FILMED | DATE REVISED | DATE FILMED | FED. ROAD DIST. NO. | STATE | FED. AID PROJ. NO. | SHEET NO. | TOTAL SHEETS |
|--------------|-------------|--------------|-------------|---------------------|---------|--------------------|-----------|--------------|
| | | | | 6 | ARK. | | | |
| | | | | JOB NO. | BR-06-4 | 9 | 33 | |
| | | | | 4607 | LAYOUT | 29615 | | |

GENERAL NOTES

BENCH MARK: TBM #2 C.P.S. IN ROOT OF 24" RED OAK 3' RT. CENTERLINE STA. 24+62 ELEV. 354.10.

DESIGN SPECIFICATIONS: AASHTO STANDARD SPECIFICATIONS FOR HIGHWAY BRIDGES, 1983 WITH INTERIM SPECIFICATIONS.

CONSTRUCTION SPECIFICATIONS: ARKANSAS STATE HIGHWAY COMMISSION STANDARD SPECIFICATIONS FOR HIGHWAY CONSTRUCTION, EDITION OF 1978 AND APPLICABLE SPECIAL PROVISIONS.

DESIGN LIVE LOAD: HS20

DESIGN METHOD: LOAD FACTOR

CONCRETE: ALL CONCRETE SHALL BE CLASS S WITH A MINIMUM 28 DAY COMPRESSIVE STRENGTH, $f'c = 3500$ PSI. ALL CONCRETE SHALL BE POURED IN THE DRY, AND ALL EXPOSED CORNERS SHALL BE CHAMFERED 3/4 INCH.

REINFORCING STEEL: SEE DETAIL DRAWINGS.

PILING: PILING IN END BENTS SHALL BE HP10X42 DRIVEN TO A MINIMUM BEARING CAPACITY OF 55 TONS PER PILE. PILING SHALL BE DRIVEN AFTER EMBANKMENT TO BOTTOM OF CAP IS IN PLACE. PILING IN INTERMEDIATE BENTS SHALL BE HP12X53 DRIVEN TO A MINIMUM BEARING CAPACITY OF 60 TONS PER PILE. ALL PILES SHALL HAVE A MINIMUM PENETRATION OF 15 FT. BELOW THE GROUND LINE. ALL PILING SHALL BE DRIVEN WITH AN APPROVED AIR, STEAM, OR DIESEL HAMMER INTO THE MATERIAL DESIGNATED AS VERY HARD CLAY ON THE BORING LOGS. LENGTHS SHOWN ARE FOR ESTIMATING QUANTITIES AND FOR USE IN DETERMINING PAYMENT FOR CUT-OFF AND BUILD-UP IN ACCORDANCE WITH THE SPECIFICATIONS.

FOR DETAILS OF OF END BENTS, SEE DWG. NO. 15202
FOR DETAILS OF INT. BENTS, SEE DWG. NO. 15202
FOR DETAILS OF 25' PRECAST SPANS, SEE DWG. NO. 15210 & 15230
FOR DETAILS OF TYPE D APPROACH CUTTERS, SEE DWG. NO. 20160

BORING LOG

- A. MOIST, MEDIUM STIFF, SILTY, SANDY CLAY
- B. MOIST, VERY LOOSE, SILTY SAND
- C. MOIST, MEDIUM DENSE, SAND AND GRAVEL
- D. MOIST, VERY HARD, CLAY
- E. MOIST, VERY HARD, CLAY WITH SILT AND SAND LENSES AND CEMENTED SILT SEAMS
- F. MOIST, VERY DENSE, SILTY SAND WITH CLAY SEAM
- G. MOIST, STIFF, SILTY SAND CLAY
- H. MOIST, VERY STIFF, SILTY CLAY
- J. MOIST, HARD CLAY

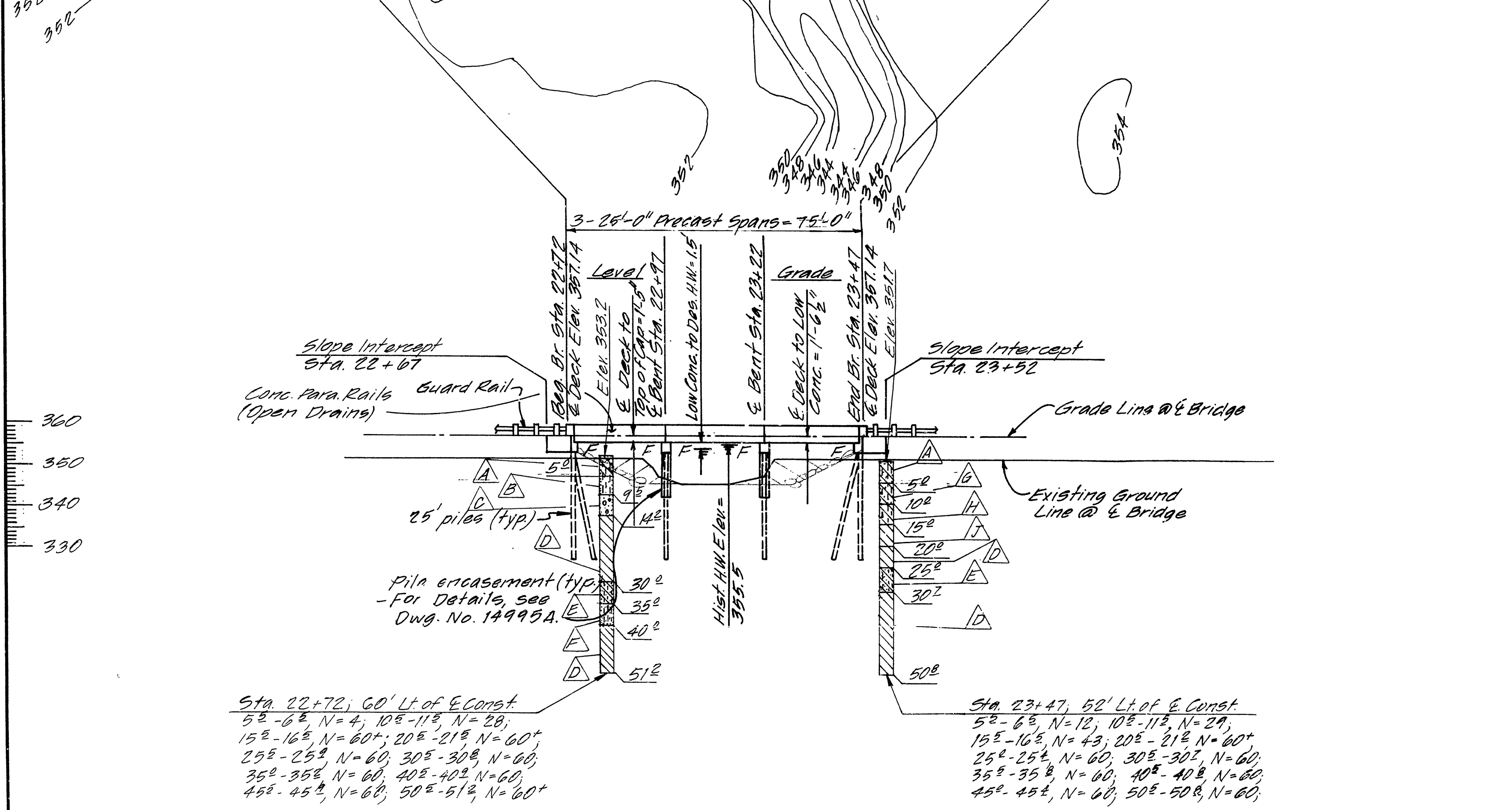
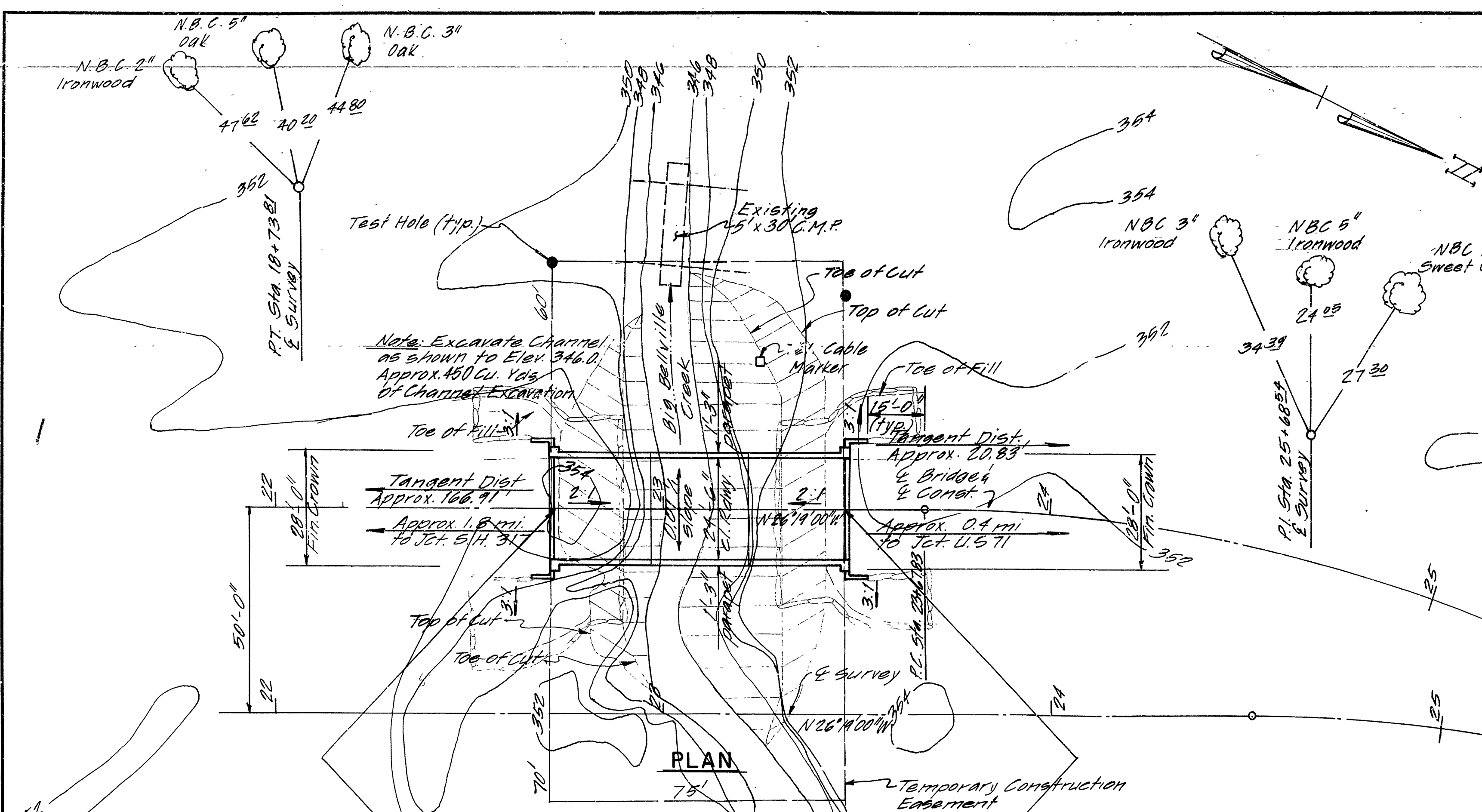
NOTE: CEMENTED SILT SEAMS THAT WERE ENCOUNTERED IN THESE BORINGS MAY BE ENCOUNTERED IN GREATER AMOUNTS AT OTHER LOCATIONS WITHIN THE PROJECT AREA.

Note: For R/W DATA & Guard Rails, see Roadway Plans.

Note: For Details of Type D Approach Cutters, see Dwg. No. 20160.

Note: For Tie between E Survey & E Const, see Roadway Plans.

Note: 1'-6" Dumped Riprap placed on Filter Blanket Top of Riprap to be Elev. 356.0. (See SP 816-1 & Dwg. No. 1891F.)



| BENT NO. | 1 | 2 | 3 | 4 |
|------------------------------------|---|---|---|---|
| DESIGN FLOOD | | | | |
| Q ₂₅ = 2330 cfs | | | | |
| Normal W.S. = Elev. 354.1 | | | | |
| Normal W.S. w/ Bkwr. = Elev. 355.9 | | | | |
| ELEVATION | | | | |
| D.A. = 34 sq. mi. | | | | |
| BASIC FLOOD | | | | |
| Q ₁₀₀ = 3320 cfs | | | | |
| Normal W.S. elev. = 354.8 | | | | |
| Normal W.S. w/ Bkwr. = Elev. 357.7 | | | | |

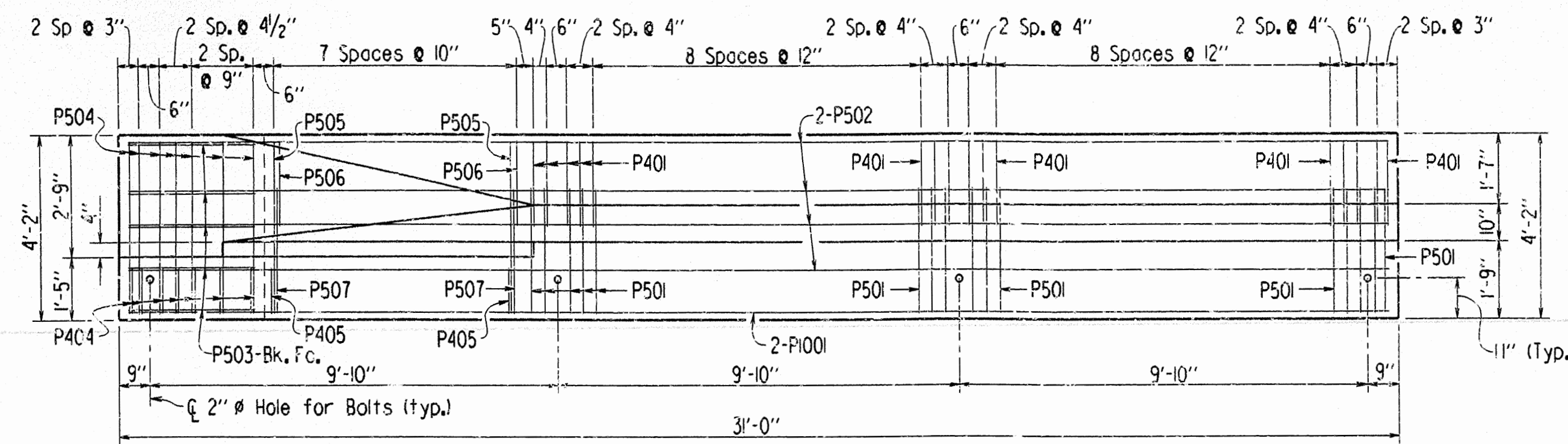
LAYOUT OF BRIDGE OVER
BIG BELLVILLE CREEK
BIG BELLVILLE CREEK BR. & APPRS.
SEVIER COUNTY
CO. RD. 304
ARKANSAS STATE HIGHWAY COMMISSION
LITTLE ROCK, ARK.

DRAWN BY: *SPK* DATE: 10-27-87
CHECKED BY: *GV A* DATE: 11-5-87
DESIGNED BY: *GMC* DATE: Oct 87

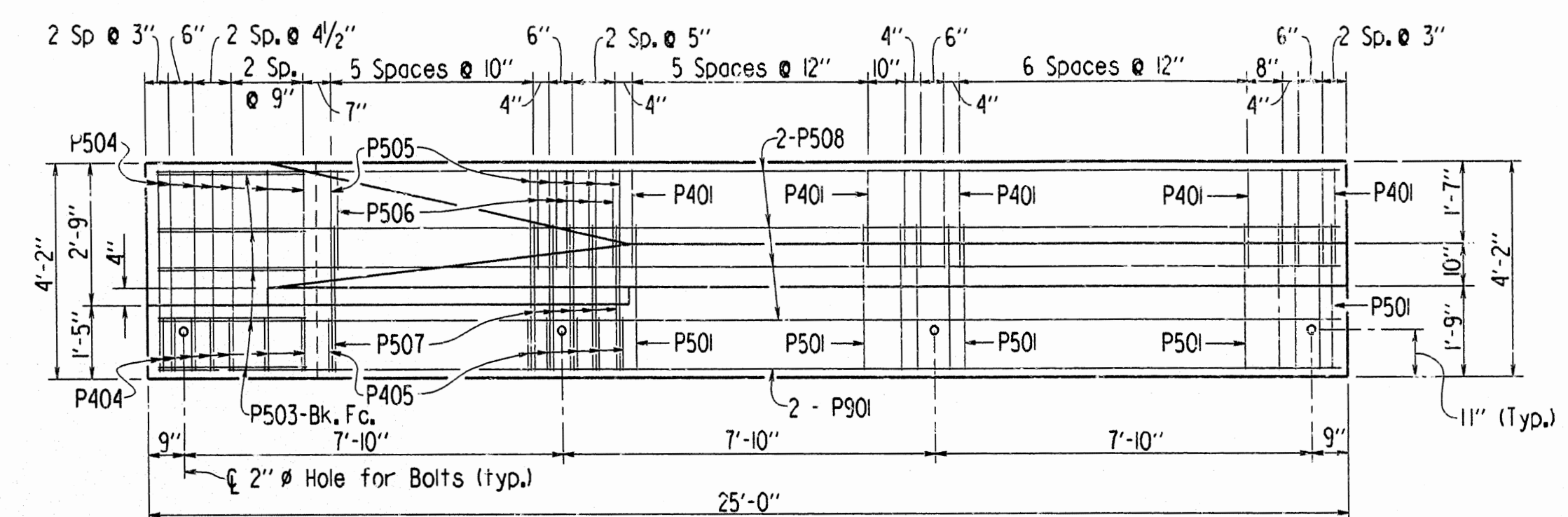
BRIDGE NO. 4607 DRAWING NO. 29615

SCALE: 1" = 20'-0"

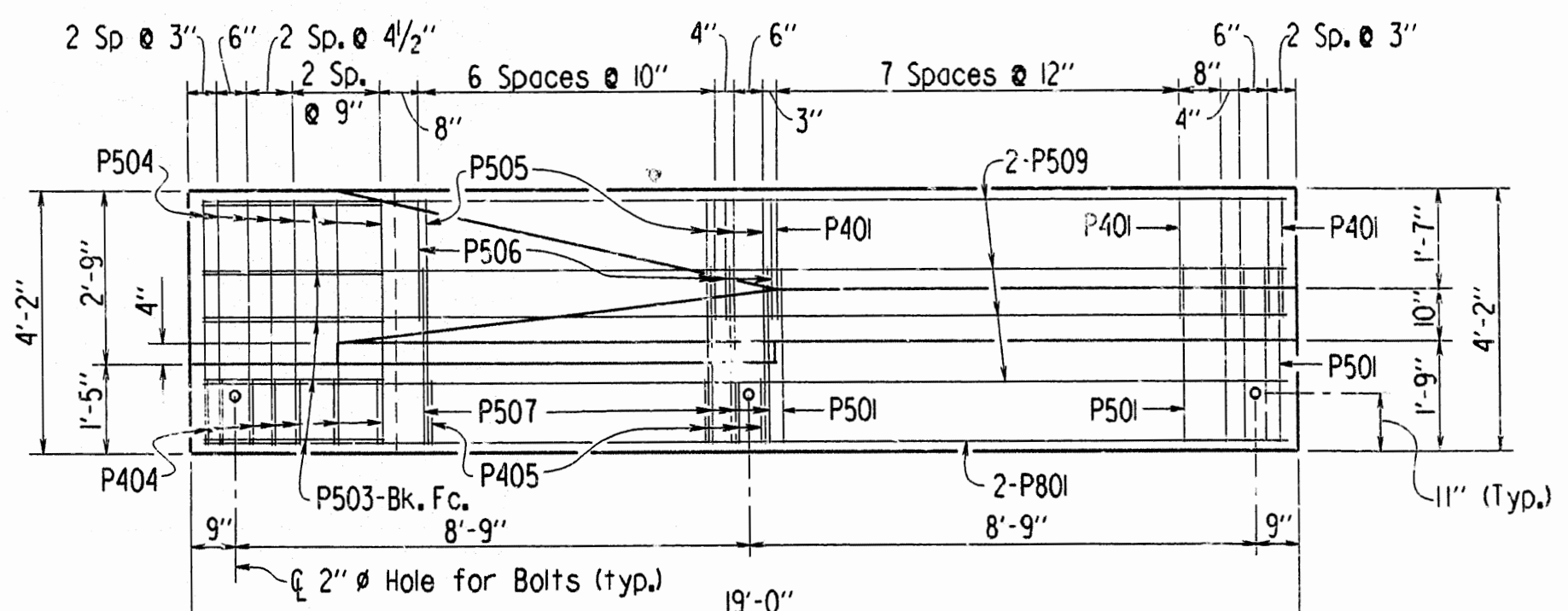
| DATE REVISED | DATE FILMED | DATE REVISED | DATE FILMED | FED. ROAD DIST. NO. | STATE | FED. AID PROJ. NO. | SHEET NO. | TOTAL SHEETS |
|--------------|---------------|--------------|-------------|----------------------|-------|--------------------|-----------|--------------|
| 12-11-87 | 7-13-12-11-87 | | | 6 | ARK. | | | |
| 6-4-92 | 6-4-92 | | | | | | | |
| 2-20-97 | 2-20-97 | | | | | | | |
| | | | | JOB NO. | | | | |
| | | | | PRECAST RAIL DETAILS | | | 15230 | |



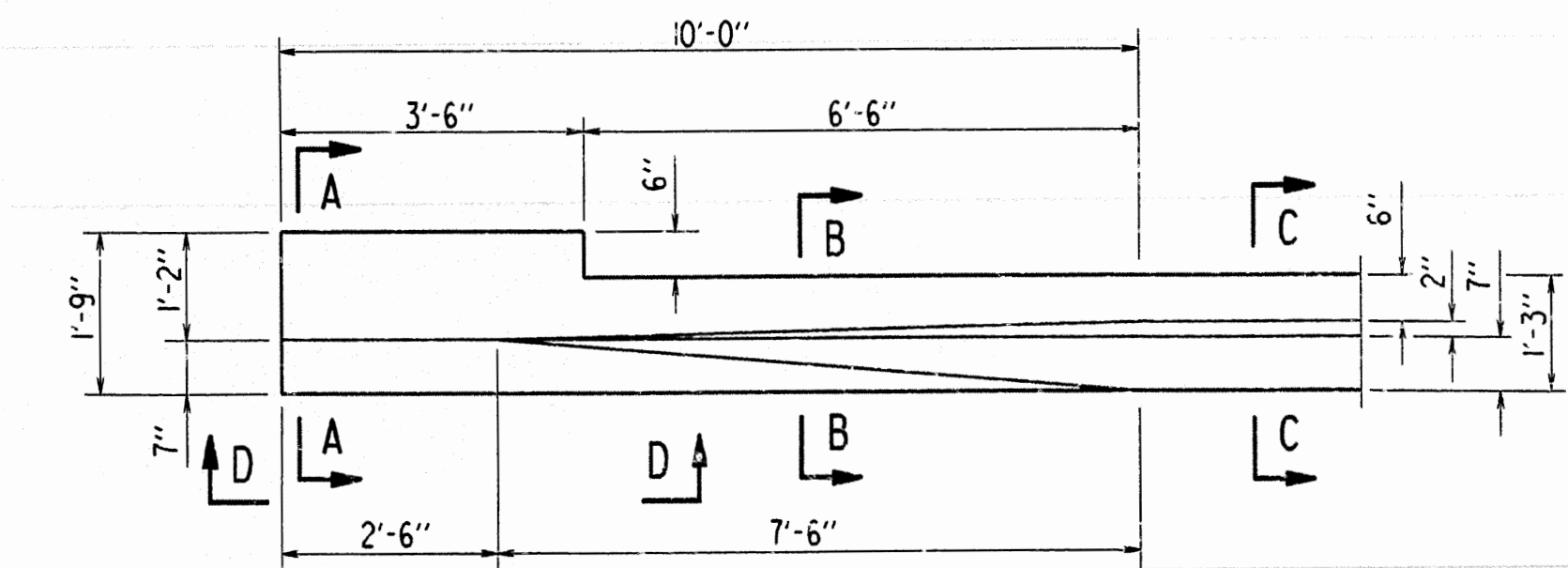
FRONT ELEVATION-PRECAST PARAPET RAIL FOR 31'-0" END SPAN
Scale 3/8" = 1'-0"



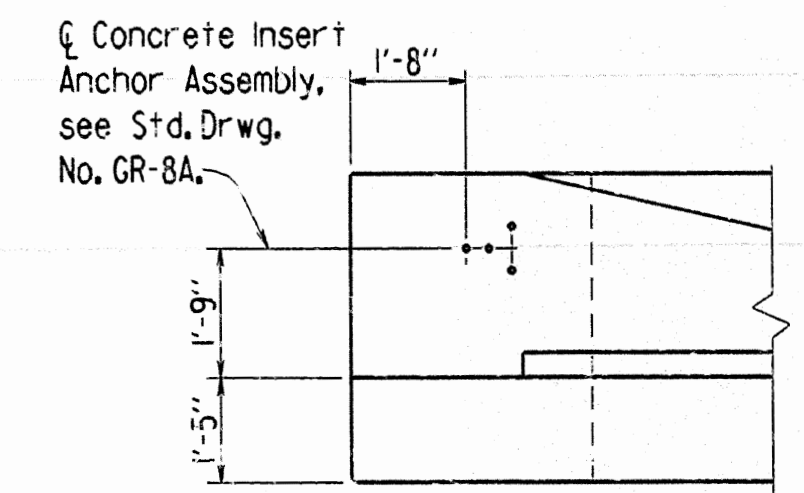
FRONT ELEVATION-PRECAST PARAPET RAIL FOR 25'-0" END SPAN
Scale 3/8" = 1'-0"



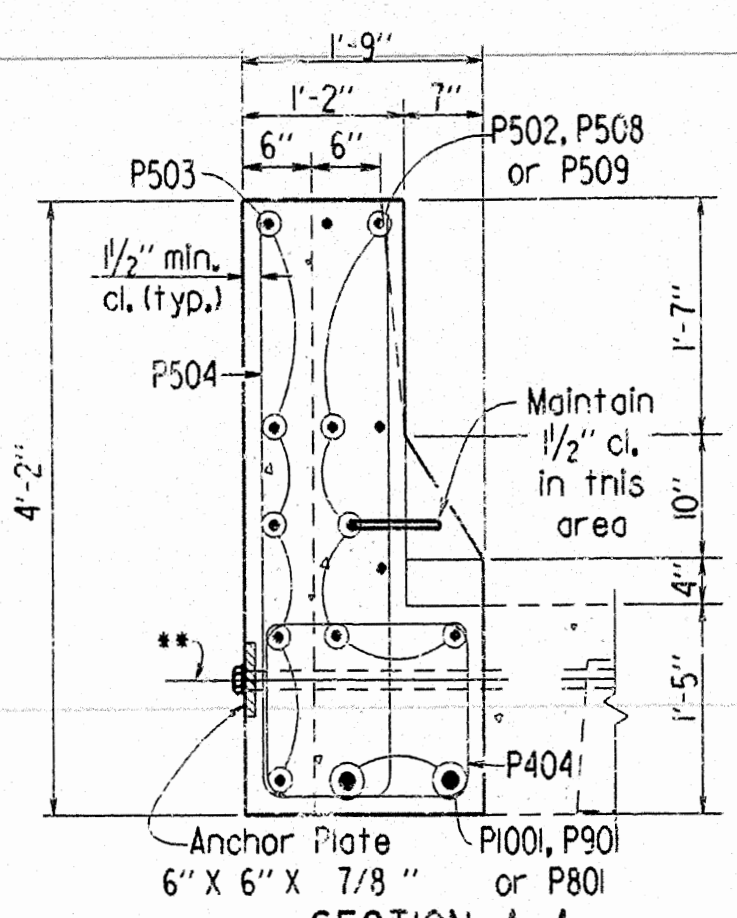
FRONT ELEVATION-PRECAST PARAPET RAIL FOR 19'-0" END SPAN
Scale 3/8" = 1'-0"



TYPICAL PLAN OF PRECAST PARAPET RAIL FOR END SPAN
Scale 1/2" = 1'-0"

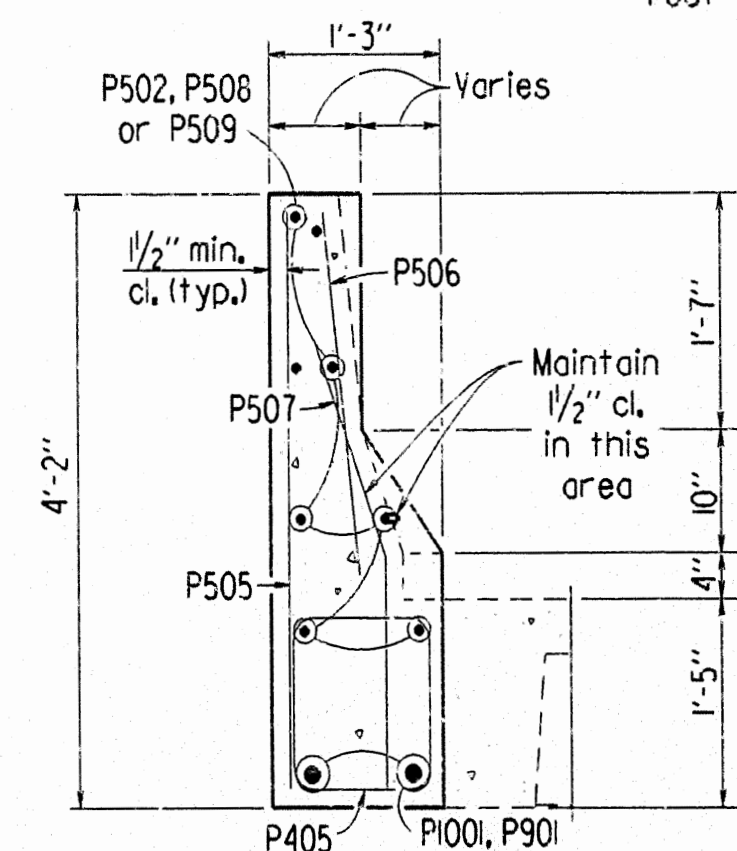


VIEW D-D
Scale 3/8" = 1'-0"

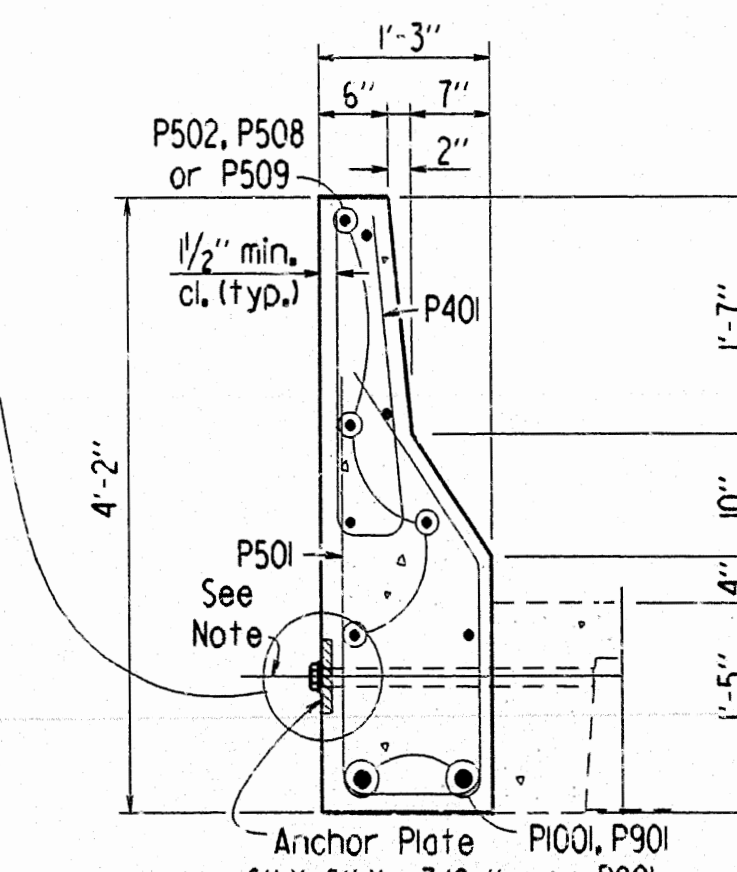


SECTION A-A
Scale 3/4" = 1'-0"

** 1 1/2" x 3'-0" Richmond S.C.A.B. or equal required at End Post Connections only.



SECTION B-B
Scale 3/4" = 1'-0"



SECTION C-C
Scale 3/4" = 1'-0"

BAR LIST FOR PARAPET RAIL UNITS

| MARK | NUMBER REQUIRED PER RAIL | | | LENGTH | PIN DIA. | BENDING DIAGRAMS |
|-------|--------------------------|-------------|-------------|--------|----------|------------------|
| | 19'-0" RAIL | 25'-0" RAIL | 31'-0" RAIL | | | |
| P401 | 12 | 20 | 30 | 4'-8" | 2" | |
| P404 | 7 | 7 | 7 | 5'-8" | 2" | |
| P405 | 9 | 10 | 8 | 4'-8" | 2" | |
| P501 | 12 | 20 | 30 | 7'-3" | 2 1/2" | |
| P502 | | | 8 | 30'-8" | Str. | |
| P503 | 5 | 5 | 5 | 3'-3" | Str. | |
| P504 | 7 | 7 | 7 | 8'-6" | 2 1/2" | |
| P505 | 9 | 10 | 8 | 3'-11" | Str. | |
| P506 | 9 | 10 | 8 | 2'-2" | Str. | |
| P507 | 9 | 10 | 8 | 2'-10" | 2 1/2" | |
| P508 | | 8 | | 24'-8" | Str. | |
| P509 | 8 | | | 18'-8" | Str. | |
| P801 | 2 | | | 18'-8" | Str. | |
| P901 | | 2 | | 24'-8" | Str. | |
| P1001 | | | 2 | 30'-8" | Str. | |

NOTES

This drawing is to be used with drawing no. 15240, 15241 and/or 15242 of which all three contain details and general notes pertaining to this drawing.

For details of "Concrete Insert Anchor Assembly", see Standard Drawing No. 20160, 2017 or GR-8A.

"Concrete Insert Anchor Assembly" will not be paid for directly but will be considered subsidiary to the item "Precast Parapet Rail Units".



DETAILS OF STANDARD PRECAST
PARAPET RAILS FOR 19'-0", 25'-0",
& 31'-0" PRECAST END SPANS
ROUTE SEC.
ARKANSAS STATE HIGHWAY COMMISSION
LITTLE ROCK, ARK.
DRAWN BY: MJT DATE: 01-10-97
CHECKED BY: RLW DATE: 1/21/97 SCALE: AS SHOWN
DESIGNED BY: STD. DATE: -
BRIDGE NO. DRAWING NO. 15230

Revised for 1996 Specs. and redrawn 2-20-97 MJT
Chkd. By: RLW Date: 1/21/97